

Operating Instructions

Auto Fill Selector (electronically controlled)





SERVICE INFORMATION / WARRANTY

Product information

Type designation

Serial number

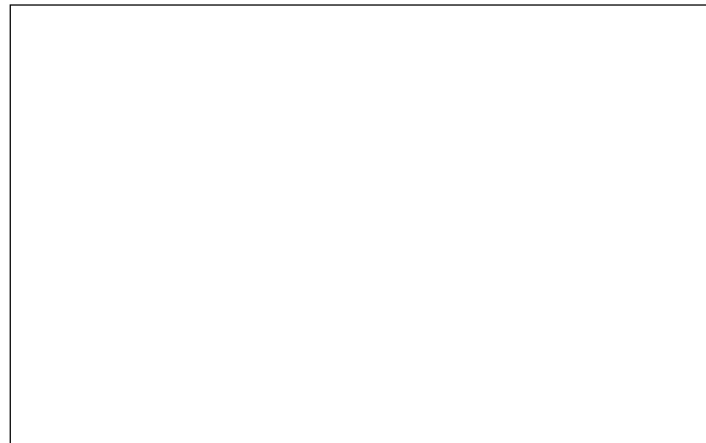
Date of construction

Purchase information

Purchase date

First commissioned on

Warranty period



Dealer's stamp

Warranty

L&W will uphold warranty claims made during a period of 12 months from the invoice date.

If the product was purchased from an official L&W dealer, the date on the dealer's invoice is valid.

Warranty claims can only be made on presentation of the original invoice.

Should verifiably defective parts have been delivered, we will decide to either replace the parts or repair them. The resulting transport and assembly costs will be invoiced.

No reduction of the purchase price or changes to the contract can be made. The parts for which a claim is being made should be kept safe by the purchaser and, when requested, sent to us at their cost. Replaced parts become the property of L&W. If maintenance work is carried out without our knowledge or permission by the purchaser or a third party, we are absolved from any liability for warranty claims. As a matter of principle, warranty claims can only be made by the initial purchaser.



TABLE OF CONTENTS

General Information and Technical Data

General Information / Description of Warning Symbols	4
Scope of Delivery	5
Technical Data	6
Dimensions	7
Unit Assembly.....	8
Flow chart	9

Safety Precautions

Intended Use / Operators	11
General Safety Precautions	12
Unit customised safety notices	13
Maintenance instructions	14
Transportation instructions / Safety regulations	15

Operation

Description of the Functionality.....	17
Description of the Operation	18

Maintenance and Service

Service, Repair and Maintenance	20
Maintenance Overview	21
Maintenance records	22 - 24
Conservation / storage of the unit / Recommissioning / Transportation notes / Disposal	25

Spare parts lists / Detailed views

Auto Fill Selector "L" version, 17 mm wrench size	27 - 29
Auto Fill Selector "S" version, 19 mm wrench size (since April 2026)	30 - 32



GENERAL INFORMATION

General Information

We strongly recommend reading this manual thoroughly prior to operation and follow all the safety precautions precisely. Damage resulting from any deviation from these instructions is excluded from warranty and liability for this product. Carry out other commissioning steps only if you have fully understood the following contents.

Before commissioning and using the unit, carry out all the essential preliminary work and measures concerning legal regulations and safety. These are described on the following pages of this operation manual.

Description of marks and warning signs

The following warning signs are used in this document to identify the corresponding warning notes which require particular attention by the user. The warning signs are defined as follows:



Caution

Indicates an imminently hazardous situation which, if not avoided, could result in serious injury, physical injury or death.



Warning

Indicates a potentially hazardous situation which, if not avoided, could result in physical injury or damage to the product or environment.



Note

Indicates additional information on how to use the unit.



DESCRIPTION

Scope of Delivery

The auto fill selector which controls the air supply from the storage and the filling panel is delivered ready to use with a maximum working pressure of 350 bar (5250 psi).

The components are mounted on a sturdy wall panel, ready for connection, incl. check valves .

Specifications

- Steel wall console, painted in RAL 7035
- Stainless steel high pressure pipe
- Stainless steel connections and check valves
- High pressure solenoid valve (Pmax.: 350 bar)
- Digital pressure switch
- Power supply 115 Volt

Options

- 420 bar Version
- Different Voltages on request

DESCRIPTION

Technical Datas



Technical Datas	Auto Fill Selector
Max. Operating Pressure [bar]:	350 bar
Medium:	Compressed Air / Breathing Air
Power Supply:	115 V / 1 phase / 50 Hz
Ambient Temperature [°C]:	-20 < +60
Protection Class:	IP 54
Dimensions W x D x H [mm]:	430 x 500 x 175
Weight [kg]	19

DESCRIPTION

Dimensions

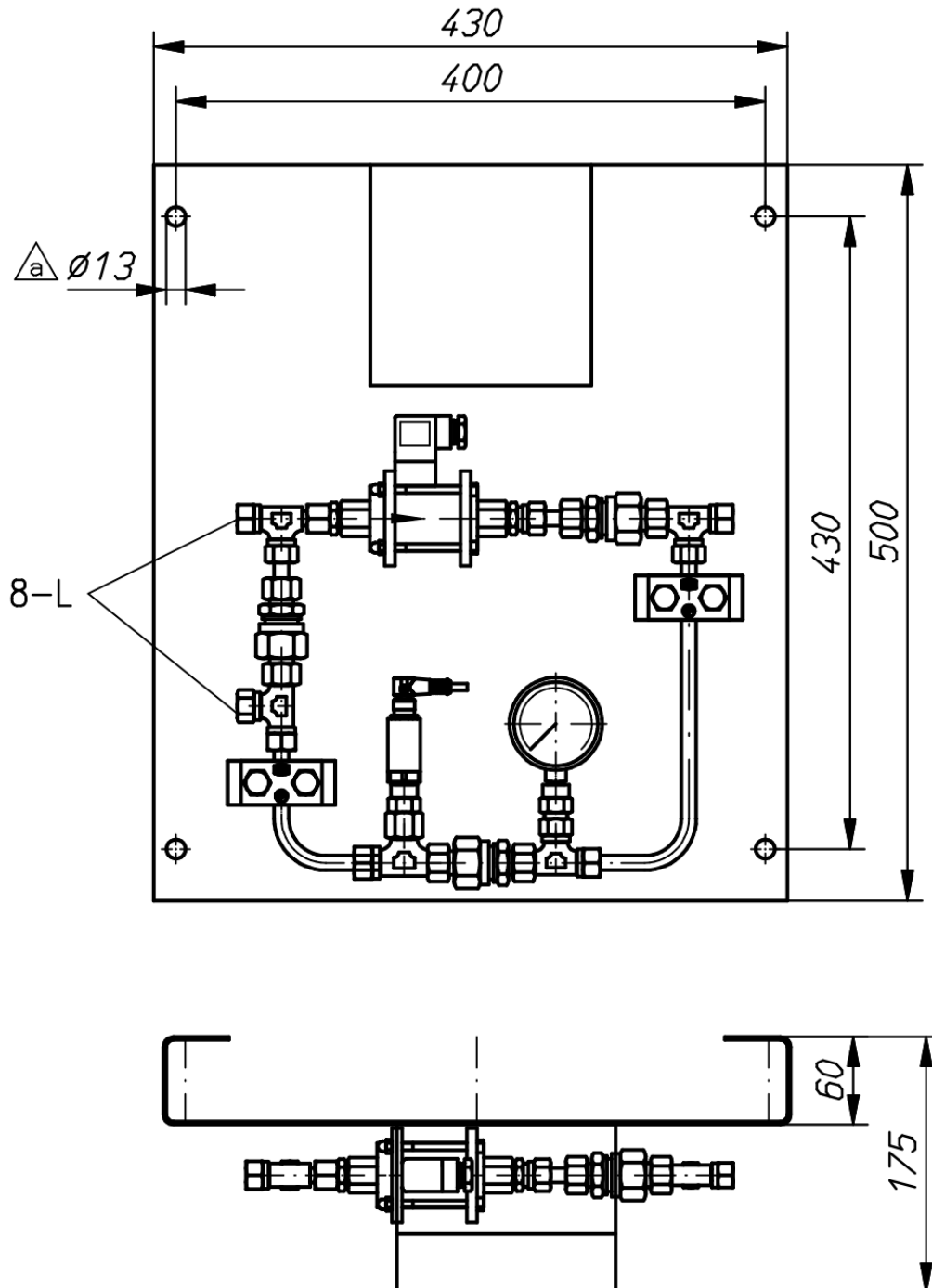
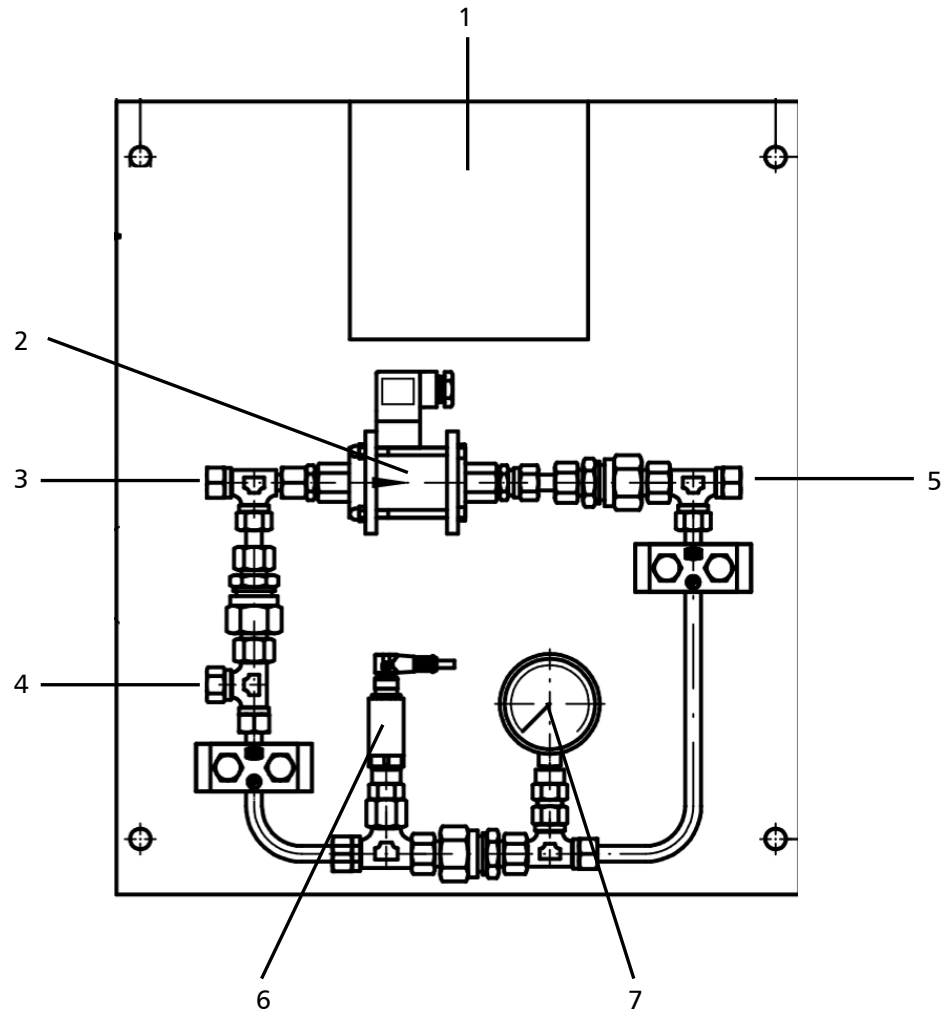


Fig. Dimensions

Graphic representation may vary

DESCRIPTION

Unit Assembly

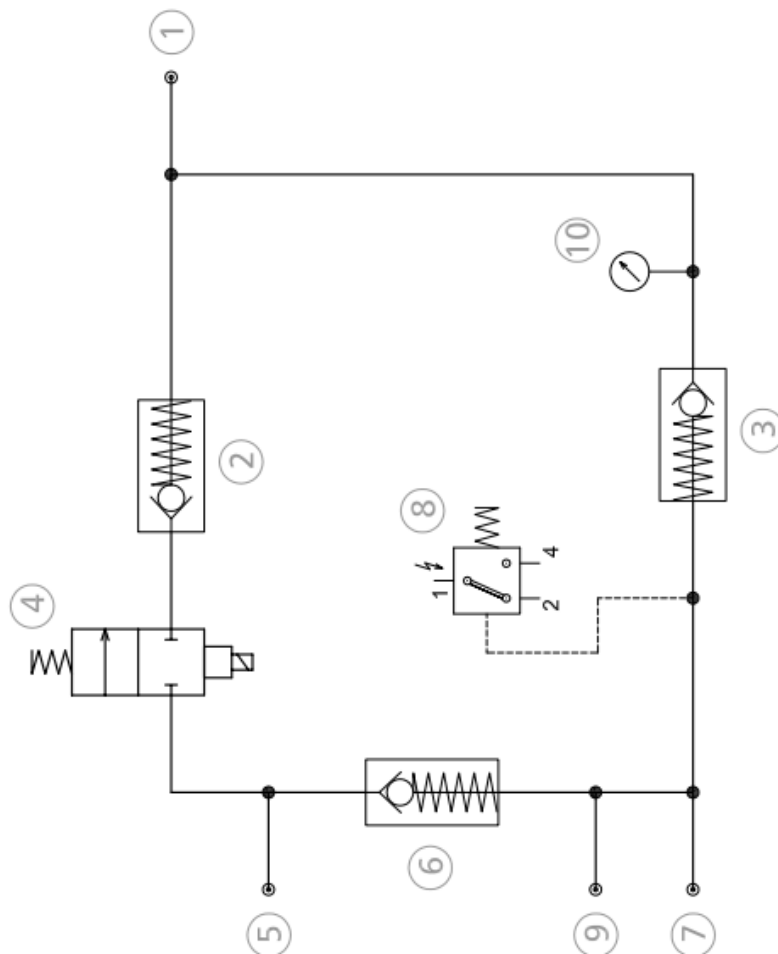


Graphic representation may vary

No.	Designation
1	Control Box
2	Pneumatic Valve (Pmax.: 350 bar)
3	Compressor Connection: 8L
4	Filling Panel Connection: 8L
5	Storage Modul Connection: 8L
6	Digital Pressure Switch
7	Pressure Gauge 0-400 bar (Storage Pressure)

DESCRIPTION

Flow chart



Flow Diagram / Fließplan

- 1 Connection Storage Tank(s) / Anschluss Druckspeicher
- 2 Non-Return Valve / Rückschlagventil
- 3 Non-Return Valve / Rückschlagventil
- 4 High Pressure Solenoid / Hochdruck-Magnetventil
- 5 Connection Compressor / Anschluss Kompressor
- 6 Non-Return Valve / Rückschlagventil
- 7 Additional Outlet (Option) / Zusätzlicher Ausgang (Option)
- 8 Pressure Switch / Druckschalter
(Std. Control - Standard Steuerung) or
Pressure Sensor / Drucksensor
(ECC Control - ECC Steuerung)
- 9 Connection Filling Panel / Anschluss Füllleiste
- 10 Pressure Gauge / Druckmanometer



SAFETY PRECAUTIONS



SAFETY PRECAUTIONS

Intended Use

Only use the unit in perfect condition for its intended purpose, safety and intended use and observe the operating instructions! In particular disorders that may affect safety have to be eliminated immediately!

Use the unit exclusively for the determined medium (see "Technical Data"). Any other use that is not specified is not authorized. The manufacturer/supplier shall not be liable for any damages resulting from such use. Such risk lies entirely with the user. Authorization for use is also under the condition that the instruction manual is complied with and inspection and maintenance requirements are enforced.

No change and modification to the unit can be made without the written agreement of the manufacturer. The manufacturer is not liable for damage to persons or property resulting from unauthorised modifications.

Operators

Target groups in these instructions;

Operators

Operators are persons who are authorized and briefed for the use of the compressor.

Qualified personnel

Qualified personnel are persons who are entitled to repair, service, modify and maintain the system.



Warning

Only trained personnel are permitted to work on the unit!



Warning

Work on the electrical equipment on / with the machine / unit may only be carried out by qualified electricians.



SAFETY PRECAUTIONS

General Safety Precautions

- Read the Operating Instructions of this product carefully prior to use.
- Strictly follow the instructions. The user must fully understand and strictly observe the instructions. Use the product only for the purposes specified in the intended use section of this document.
- Do not dispose the operating instructions. Ensure that they are retained and appropriately used by the product user.
- Only trained and competent personnel are permitted to use this product.
- Comply with all local and national rules and regulations associated with this product.
- Only trained and competent personnel are permitted to inspect, repair and service the product.
- Only authentic L&W parts and accessories may be used for maintenance work. Otherwise, the proper functioning of the product may be impaired.
- Do not use faulty or incomplete products. Do not modify the product.
- Inform L&W in the event of any product or component fault or failure.
- The quality of the air supply must meet EN 12021 specifications for breathing air.
- Do not use the product in areas prone to explosion or in the presence of flammable gases. The product is not designed for these applications. An explosion might be the result if certain conditions apply.



SAFETY PRECAUTIONS

Unit customised safety notices

Organisational measures

- In addition to the instruction manual, observe and comply with universally valid legal and other obligatory regulations regarding accident prevention and environment protection.
- In addition to the instruction manual, provide supplementary instructions for supervision and monitoring duties taking into consideration exceptional factors e.g. with regard to organisation of work, production, personnel employed.
- Supervise personnel's work in accordance with the instruction manual, taking into account safety and danger factors.
- Observe all safety and danger notices on the compressor and check readability and completeness.

Safety instructions operation

- Take measures to ensure that the machine is only taken into operation under safe and functional conditions. Only operate if all protective and safety equipment, e.g. detachable protective equipment, are provided and in good working order.
- Check the unit at least once per day for obvious damage and defects. Inform the responsible department / person immediately if anything is not as it should be (including operation performance). Shut down the unit immediately if necessary and lock it.
- In case of malfunction, lock it. Repair malfunctions immediately.
- Ensure safe and environmentally friendly disposal of consumables and old parts.
- The stipulated hearing protectors must be worn.
- When handling with fats, oils and other chemical agents, observe the note for the product-related safety.



SAFETY PRECAUTIONS

Maintenance instructions

- Immediately repair any damage. Escaping compressed air can cause injury.
- Depressurise system and pressure lines before beginning repair work.
- Pressurised air lines must be laid and mounted by qualified personnel. Connections must not be mixed up. Fittings, length and quality of the piping must correspond to requirements.
- Adjustment, maintenance and inspection activities and keep appointments, including information on replacement parts / equipment, prescribed in the operating instructions have to be respected.
- The machine and especially the connections and fittings should be cleaned from oil, fuel and maintenance products at the beginning of the maintenance / repair. Do not use aggressive cleaning agents. Use fibre-free cleaning cloths.
- After cleaning, examine all pipes for leaks, loose connections, chafing and damage. Immediately eliminate any faults.
- Always retighten any screw connections loosened for maintenance or repair work.
- If it is necessary to remove safety devices for maintenance and repair work, these must be replaced and checked immediately after completion of the maintenance or repair work.
- Only personnel with particular knowledge and experience with pneumatics may carry out work on pneumatic equipment.
- Only personnel with particular knowledge and experience in gas equipment may carry out work on gas equipment.



SAFETY PRECAUTIONS

Transportation instructions

- Parts which need to be dismantled for transport purposes must be carefully replaced and secured before taking into operation.
- The transport may only be carried out by trained personnel.
- For transportation, only use lifting devices and equipment with sufficient lifting power.
- Do not stand or work under suspended loads.
- Also separate from minor relocation machinery / system of any external energy supply. Before recommissioning, reconnect the machine to the mains according to regulations.
- When recommissioning, proceed according to the operating instructions..

Safety regulations

- Inspections according to legal and local obligatory regulations regarding accident prevention are carried out by the manufacturer or by authorised expert personnel. No guarantees whatsoever are valid for damage caused or favoured by the non-consideration of these directions for use.



OPERATION

OPERATION

Important operating instructions



Warning

Work on the electrical equipment on / with the machine / unit may only be carried out by qualified electricians.

Check if power supply is usable for the auto filling selector

Prior to first commissioning, observe the following:

Necessary steps are described as follows:

- Check all connections and retighten if necessary
- Check if the power supply is usable for the unit
- Connect compressor, storage and filling panel accurate to the system

Description of the Functionality:

The digital pressure sensor opens automatically the high-pressure solenoid valve after reaching the final pressure of the diving cylinders, thereby the breathing air passes from the compressor to the storage system. Once the pressure of the storage cylinders has reached the auto stop pressure of the compressor, the compressor switches off automatically.

This way of cylinder filling provides a time advantage as the air which was used from the storage system to fill the diving cylinders which are connected to the filling panel, is filled automatically by the auto filling selector after the diving cylinders has reached the final pressure.



OPERATION

Important operating instructions

Description of the Operation:

1. Connect the diving cylinders to the filling panel
2. Open the lever filling valves
3. Open the cylinder valves
4. The air from the storage tanks flows into the diving cylinder
5. As soon as the storage pressure is no longer sufficient to achieve the final pressure of the cylinders or the filling rate should be increased please start the compressor (in automatic mode, the compressor starts automatically)
6. The auto filling selector primarily fill the cylinders at the filling panel and after reaching 315 bar the auto fill selector switches automatically to the storage system
7. Now you can close the cylinder valves, close the lever filling valves and disconnect the cylinder (if needed connect the new bottles and the procedure start from the beginning)
8. As soon as the compressor has filled the storage tanks up to the final pressure (320 bar) the compressor stops (if the compressor is equipped with auto stop function)

Recommended settings for bottles with 300 bar filling pressure:

- Set pressure for the final safety valve in the compressor: 330 bar
- Set pressure for the solenoid valve of the auto filling selector: 315 bar
- Auto Stop of the compressor system: 320 bar

If several bottles in a row are filled, it is advantageous to operate the compressor system with an automatic start function.



MAINTENANCE AND SERVICE



MAINTENANCE AND SERVICE

Service, Repair and Maintenance

Carry out service and maintenance work exclusively when the unit depressurised. The unit should be leak-checked regularly. Leaks can be preferably localised by using a leak detector spray (if necessary, brush pipes with soapy water).

We urgently recommend that all maintenance, repair and installation work must only be carried out by trained personnel. This is necessary because all maintenance work can not be explained exactly and detailed in this manual.

Only use authentic spare parts for service work.



Danger

Components under pressure, such as hose ends, can quickly come loose when manipulated and can cause potentially fatal injuries due to the pressure surge. Any work on system parts may only be performed in a pressure-compensated state.



Warning

The use of accessories that have not been tested can lead to death or serious injury or damage to the unit. Only use authentic spare parts for service work.



Warning

Carry out maintenance or service work when the unit is switched off and protected against unexpected restart.



MAINTENANCE AND SERVICE

Maintenance Overview

Maintenance Work	Interval	Qty.	Part. No.
Verify screws and connections if installed correctly	After 15 operating hours, continuously every 500 operating hours	-	-
Leak-check of pressure lines and connections	Every 200 operating hours	-	-
Clean pressure lines from contaminations	Depending on pollution grade, at least once a year	-	-
Function test of the check valves	Once a year	-	-
Check tightness of the magnetic valve	Once a year	-	-



MAINTENANCE RECORDS



STORAGE

Conservation / storage of the unit

If the unit is not to be used for an extended period of time, we recommend the following conservation to be carried out before storage:

- Open condensate drain valves
- Open filter housing, lubricate thread with a food grade grease and close it afterwards.
- Store the unit in a dry and dust-free place. A cover is recommended as long as condensation can be avoided.

Recommissioning

Before recommissioning the following steps have to be carried out:

- Clean pressure lines from contaminations
- Tighten all pressure lines and connections and check for leaks.
- Replace o-rings and back-up rings of the housing
- Replace intake filter cartridge.
- Check the correct function of the safety valve and pressure maintaining / non return valve.

Transportation notes

- Parts which need to be dismantled for transport purposes must be carefully replaced and secured before recommissioning.
- The transport may only be carried out by trained personnel.
- For transportation, only use lifting devices and equipment with sufficient lifting power.
- Do not stand or work under suspended loads.
- Also separate from minor relocation machinery / system of any external energy supply. Before recommissioning, reconnect the machine to the mains according to regulations.
- When recommissioning, proceed according to the operating instructions.

Disposal

The product must be disposed in accordance with national waste disposal regulations and by an appropriate waste disposal company.



**SPARE PARTS LISTS
/ DETAILED VIEWS**



SPARE PART LIST

Auto Fill Selector "L" version, 17 mm wrench size

Order No.	Benennung	Description	Qty
000570	Halter für Magnetventil	Bracket Solenoid Valve	1
000610	Magnetventil 230V / 0-400 bar	Solenoid Valve 230V / 0-400 bar	1
000628	Einfachschelle 1 x 8 mm	Pipe Clamp 1 x 8 mm	2
000652	Monometer 0-400 bar / Kl. 1,6	Pressure Gauge 0-400 bar / Kl. 1.6	1
000741	Verschraubung GE08LR3/8EDOMDA3C	Connection	2
000757	T-Verschraubung, EVL08LOMDCF	T-Connection with fixed nut	5
000765	Schneidring 8 mm PSR 08 LX	Olive Seal 8 mm	10
000766	Überwurfmutter 08 L M08LCFX	Nut	10
000773	Manometerverschraubung G1/4"/08L MAVE 08 LR	Connection Pressure Gauge	2
000828	Rückschlagventil beidseitig Rohranschluss 8L , RHD08LOMDCF	Non-Return Valve, 8L both ends	3
000834	Verschraubung GZ08LCF beids. mit fester Mutter	Connector with fixed nuts 8L	2
001012	Zylinderschraube M6 x 50	Allen Bolt M6 x 50	2
001063	Zylinderschraube M8 x 95	Allen Bolt M8 x 95	2
003610	Digitaler Druckschalter 0-400 bar	Digital Pressure Switch 0-400 bar	1
005547	Klemmkasten ZSA Rittal - PK 9518.000 - 182x180x111mm	PVC terminal housing	1
005549	Distanzklotz ALU für Einfachschelle	Alloy Spacer for clamp	2
010057	Wandkonsole Zuschaltautomatik RAL6026 Elektro / Pneumatische Ausführung	Console Auto. Filling Selecter	1
011394	Druckaufnehmer / Drucktransmitter / RPC 0-400 bar, 4-20 mA, G1/4	Pressure transmitter RPC	1

DETAILED VIEW

Auto Fill Selector "L" version, 17 mm wrench size

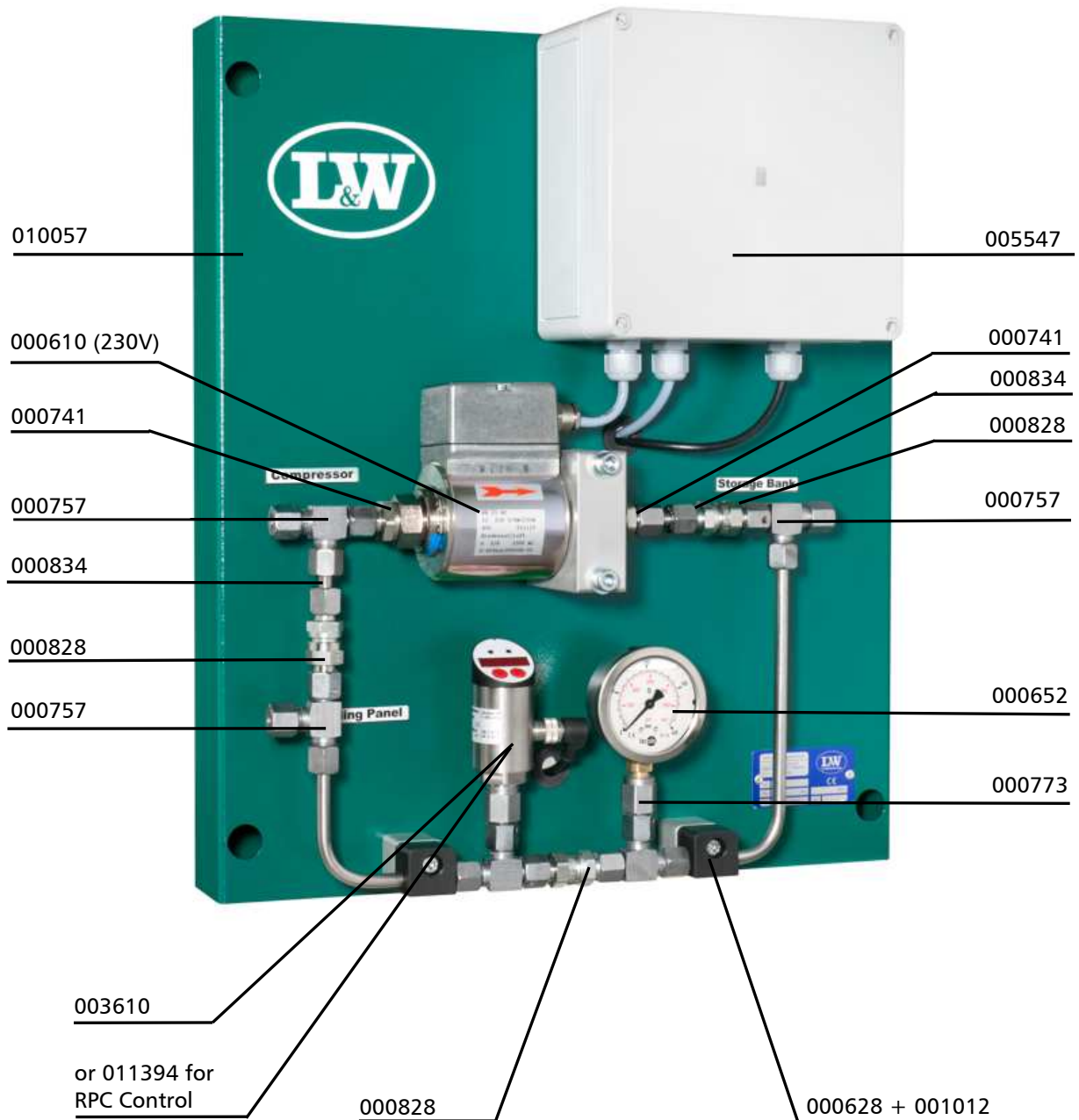


Illustration may vary

DETAILED VIEW

Auto Fill Selector "L" version, 17 mm wrench size

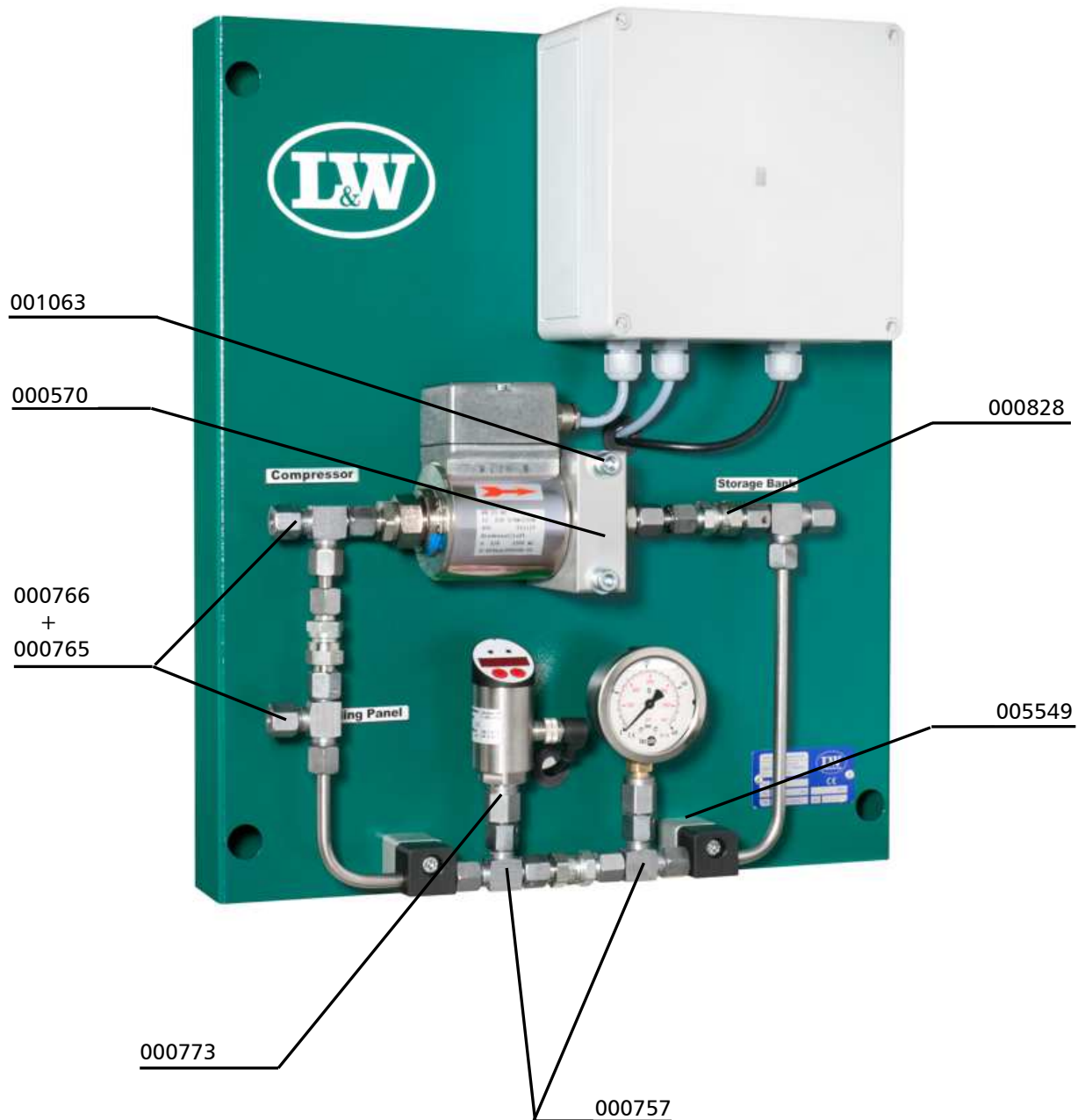


Illustration may vary

SPARE PART LIST

Auto Fill Selector "S" version, 19 mm wrench size (since April 2026)

Order No.	Benennung	Description	Qty
000570	Halter für Magnetventil	Bracket Solenoid Valve	1
000610	Magnetventil 230V / 0-400 bar	Solenoid Valve 230V / 0-400 bar	1
000628	Einfachschelle 1 x 8 mm	Pipe Clamp 1 x 8 mm	2
000652	Monometer 0-400 bar / Kl. 1,6	Pressure Gauge 0-400 bar / Kl. 1.6	1
000742	Verschraubung GE08SR3/8CFX	Connection	2
000765	Schneidring 8 mm PSR 08 LX	Olive Seal 8 mm	10
000767	Überwurfmutter 8S M16x1,5 IG	Nut	10
000774	Manometerverschraubung MAVE 08S R A3C IG1/4"	Connection Pressure Gauge	2
000884	Rückschlagventil 8S RHD mit Muttern & Schneidring	Non-Return Valve, 8S both ends	3
001012	Zylinderschraube M6 x 50	Allen Bolt M6 x 50	2
001063	Zylinderschraube M8 x 95	Allen Bolt M8 x 95	2
003610	Digitaler Druckschalter 0-400 bar	Digital Pressure Switch 0-400 bar	1
005043	T-Verschraubung mit fester Mutter EL08S OMDCF	T-Connection with fixed nut	5
005547	Klemmkasten ZSA Rittal - PK 9518.000 - 182x180x111mm	PVC terminal housing	1
005549	Distanzklotz ALU für Einfachschelle	Alloy Spacer for clamp	2
007731	Verschraubung GZ08S CF beids. mit fester Mutter	Connector with fixed nuts 8S	2
010057	Wandkonsole Zuschaltautomatik RAL6026 Elektro / Pneumatische Ausführung	Console Auto. Filling Selecter	1
011394	Druckaufnehmer / Drucktransmitter / RPC 0-400 bar, 4-20 mA, G1/4	Pressure transmitter RPC	1

DETAILED VIEW

Auto Fill Selector "S" version, 19 mm wrench size (since April 2026)

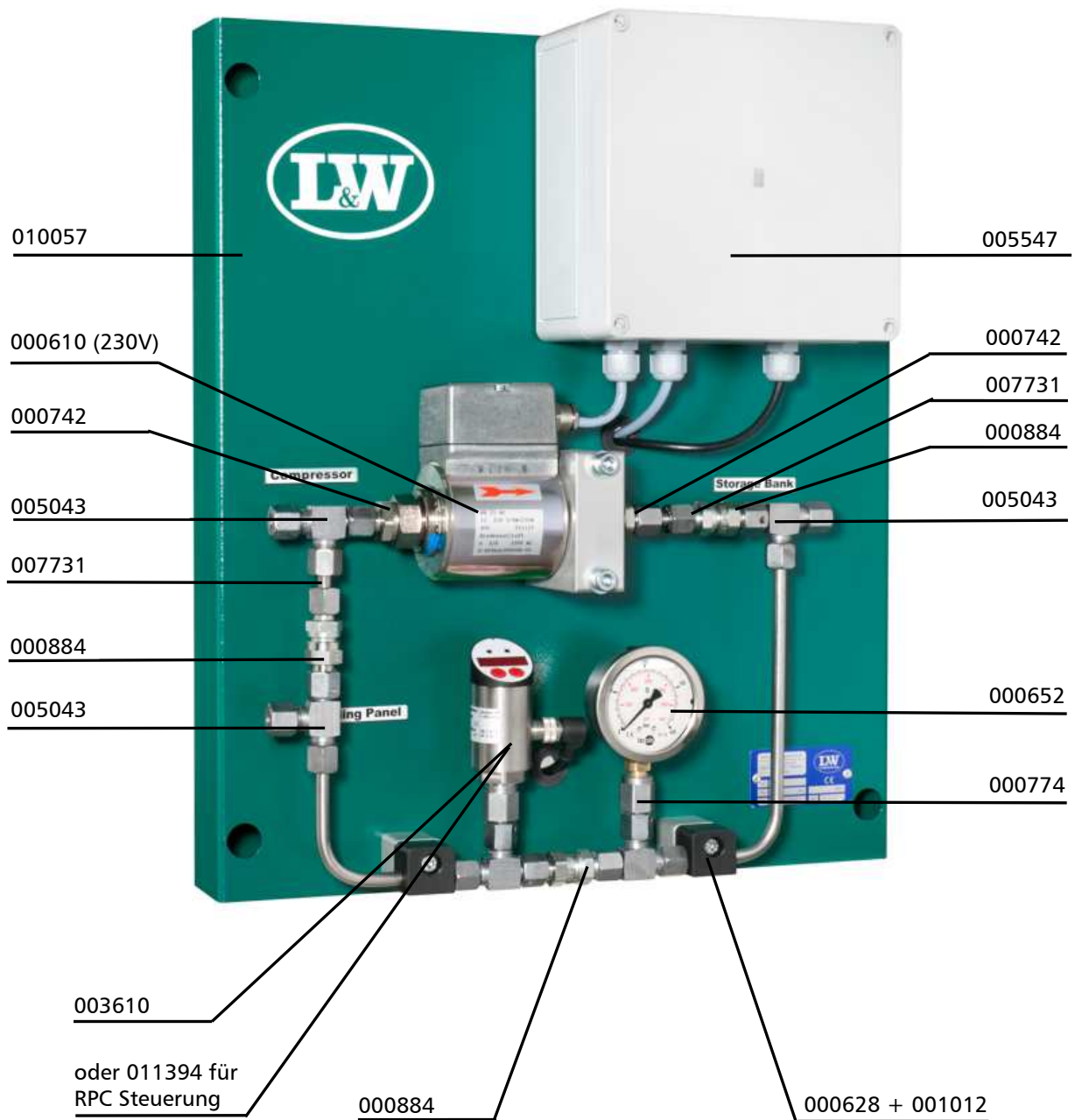


Illustration may vary

DETAILED VIEW

Auto Fill Selector "S" version, 19 mm wrench size (since April 2026)

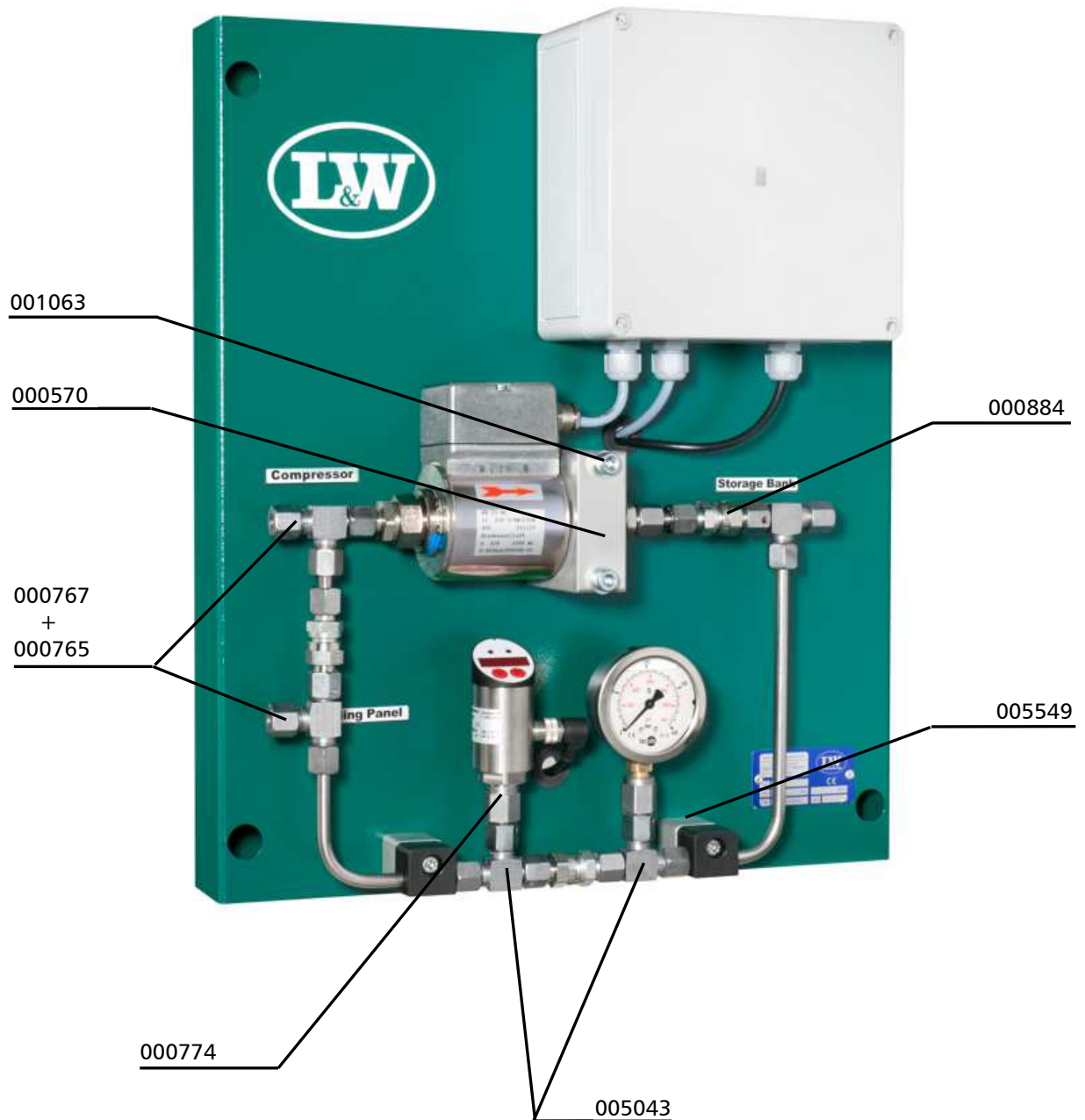


Illustration may vary